



## Products Features

- ▶ Using special optical materials.
- ▶ Many patterns for choosing. (lattice, line, dot etc.)
- ▶ High uniformity and shadowless.
- ▶ Emitting light can be coaxial with camera.
- ▶ Having the merits of Coaxial and Shadowless Lights.

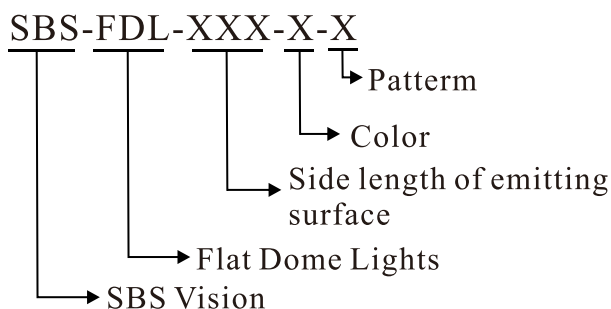
## Customization

- Pattern
- Color
- Connector
- Cable length
- Power
- Mounting
- Dimensions

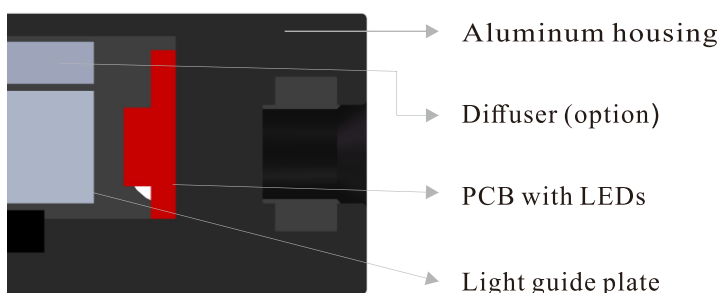
## Applications the light be used for

- Defects inspection of a little reflective metal.
- Characters inspection of arc surface.
- Pin inspection of electronic components.
- Surface inspection of packing bag and film.

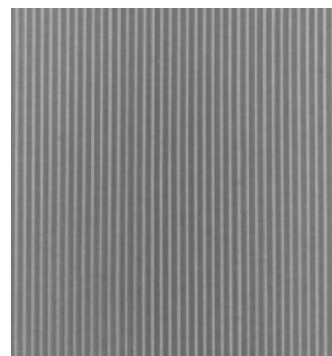
## Model Description



## Structure



## Line Pattern



## Parameter

Item	Model	Power consumption Red Color	Power consumption (W,B,G)	Option	Extension cable	Recommended Controller
1	SBS-FDL50	24V/0.9W	24V/1.5W	Diffuser	1m/3m/5m	SBS-AC24-2B (Analog controller)
2	SBS-FDL100	24V/1.8W	24V/2.8W	Diffuser	1m/3m/5m	SBS-DC24-2B (Digital controller)
3	SBS-FDL150	24V/2.7W	24V/4.3W	Diffuser	1m/3m/5m	SBS-SC24-B (Strobe controller)

## Dimensions(mm)

