

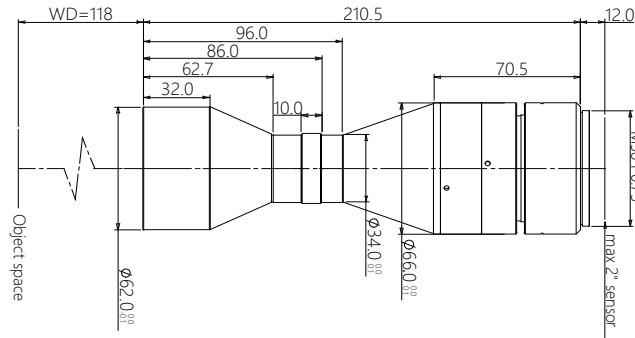


vision solution

# Specification

## SBS-SCJ118-0.786

High Resolution Double Telecentric Lens



### Features (SBS-SCJ series)

- \* Excellent double telecentric design for high resolution image result.
- \* Field of view is from 26mm to 300mm, suitable for most of application.
- \* Big Iris, low distortion, high parallel degree, big depth of view.
- \* Sensor size is available for 1/2.5" 1/2" 1/1.8" 2/3" 1" 4/3" 1.75" 2"Φ39 35mm full.

### Parameters

FOV (Dia.mm)	42
Mag.(x)	0.786
WD (mm)	118±3
Sensor size (Dia.mm)	33(2")
Image F#	12.9
Image MTF30(pl/mm)	>65
Object DOF (mm)	±1.2@F20
Object distortion (%)	<0.1
Object telecentric degree	<0.1
Object I/O(mm)	341±3

### Mechanical

Mount	M42/M48/M58
Total length (mm)	210.5
N.W(KG)	1.0

### Field of View (mm x mm)

2" DALSA 12M (24.58x18.43)	31.3x23.4
2" PYTHON 25K (23.04x23.04)	29.3x29.3